

LaSalle County
Highway Department
2024 Annual Report

Donald R. Ernat, P.E., County Engineer

Highway Committee

Walter Roach Jr., Committee Chairman

Ronald Blue

Ray Gatza

Stephen Aubry

William J. Brown, Jr.

LouAnne Carretto

Gelinda Heller

www.lasallecountyhighway.org



LASALLE COUNTY HIGHWAY DEPARTMENT

Donald R. Ernat, County Engineer

1400 N. 27TH ROAD – P.O. BOX 128 – OTTAWA, IL 61350

TEL. (815) 434-0743 FAX (815) 434-0747

e-mail: mail@lasallecountyil.gov

TO ALL COUNTY BOARD MEMBERS:

This 2024 Annual Report of the Highway Department recaps the projects and activities completed during the year. The following is an overview of the structure of the Department and its finances.

This report can be read on our website which also contains current information on our improvement programs, committee meeting dates and agendas, applications for entrance permits and moving permits, road posting and closures, policies and general information about the Department. New and changing information is posted by our staff. The website can be accessed via the internet at www.lasallecountyhighway.org or by clicking the Highway Department link on the LaSalle County main page.

STAFF

There are currently 36 employees at the Highway Department including the County Engineer. The functions of the Department are divided into three dovetailing areas – administration, maintenance, and engineering. The attached organizational chart outlines the staff and the remainder of the report details their activities in 2024.

HIGHWAY DEPARTMENT FUNDING

The three main sources of funding used to finance the programs and activities of the Highway Department are federal funds, state funds and county property tax. The following summarizes how these funds are received and used.

FEDERAL FUNDS

The U.S. Congress authorizes bills to fund the federal highway investment programs. These funds are distributed to the local governments through the state Departments of Transportation. Certain highways in LaSalle County are eligible for federal aid. Up to 80% of the improvement cost is paid with federal monies and must be matched by a minimum of 20% local funds. The design, associated reports, and construction must all meet strict federal criteria.

The **Surface Transportation Program Fund** allocation to all counties in Illinois for FY2025 was \$76,378,393 with \$68,122,416 distributed to the 96 downstate counties.

Ten percent of this amount is divided equally among the downstate counties. The balance is allocated based upon a composite score for non-urban area, non-urban population and non-urban mileage. Using these criteria LaSalle County is ranked first among the 96 downstate counties. LaSalle County's allocation of FY2025 STP Rural Funds was \$1,426,039.01. STP Rural Funds are the largest source of Federal-aid funds available to counties in Illinois. Annexation of large rural areas into municipalities erodes this source of funding to counties.

Since the passage of Infrastructure Investment and Jobs Act (IIJA), the Local Bridge Formula Program has replaced STP-Bridge. The LBFP continues to follow the same eligibility and requirements as STP-Bridge. The funding is distributed based on the combined deficient square footage of bridge decks on eligible county, township and municipal structures within a county. The use of these funds is programmed by the county engineers with the Illinois Department of Transportation. In 2024, there were 48 structures in LaSalle County eligible for STP Bridge funding. LaSalle County's allotment for FY 2025 was \$640,267.65. The total allocation of STP Bridge funds to all counties in Illinois in FY 2025 was \$60,012,405.

The **Special Bridge Program** (formally the Major Bridge Program) provides federal funds for local and state bridges that meet the eligibility criteria. This is a discretionary program and all proposed projects must compete on a statewide level. LaSalle County, through the Highway Department, has captured \$16.35 million from this fund in recent years for structures carrying County Highway 21 over the Fox River at Wedron (\$580,000); County Highway 3 over the Fox River at Sheridan (\$2,400,000); Broadway Street, Streator over the BNSF Rail Road (\$1,626,000); former County Highway 58 over Somonauk Creek near Lake Holiday (\$960,000); County Highway 33 over the Little Vermillion River (\$1,120,000); County Highway 23 (Ed Hand) over the Vermillion River (\$2,928,000); First Avenue, Mendota over First Creek (\$1,288,000); N.42nd Road over Somonauk Creek, Sheridan (\$1,312,000); C.H. 5 (Sandy Ford Road) over the Vermillion River (\$8,120,000); and C.H. 5 (Richards Road) over Wolf Creek (\$1,184,000). These funds are being used to construct \$26 million in bridge projects. The Highway Department has submitted an application for the FY 2029 Special Bridge Program for the Clark Run Bridge seeking \$1,761,000 in federal funds.

The **Highway Safety Improvement Program (HSIP)** is a core Federal-aid funding program with the goal of achieving a significant reduction in traffic fatalities and serious injuries on all public roads. Both fatalities and serious injuries on the local roadway system have increased. Increased emphasis is being placed to address these severe crashes occurring on local roadways. Highway safety improvement projects correct, or improve a location or feature, or address a highway safety problem that is contributing to these severe crashes on the roadway. The federal funding level is a maximum of 90 percent of the total improvement cost for HSIP projects with the local agency being responsible for the 10 percent matching funds. Past awards are \$612,443 for intersection improvements at C.H. 33 & C.H. 43, \$189,000 for intersection improvements at C.H. 5 & IL Route 23, \$865,170 for shoulders and rumble strips on CH 15 and \$905,914 for shoulders and rumble strips on CH 2. Successful applications this year with a HSIP commitment of \$1,516,996 for shoulders and rumble strips on C.H. 4 and \$639,796 for shoulders and rumble strips on CH 51.

STATE FUNDS

State funds are distributed to the counties through the regional offices of the Illinois Department of Transportation. Types of state funds used by LaSalle County include Motor Fuel Tax (MFT), Truck Access Route Program (TARP), County Consolidated Funds and Rebuild Illinois Bond Funds.

The **Illinois Motor Fuel Tax** fund is derived from a per gallon tax on motor fuel used by vehicles operating upon public highways and recreational watercraft operating upon the waters of the State. IDOT issues monthly warrants to the County Treasurer in the amount of the County's share of MFT, which is based upon motor vehicle license fees and the flow chart included in this report. Beginning July 1, 2019, The Motor Fuel Tax (MFT) law was amended to impose a tax rate increase from 19 cents to 38 cents per gallon on motor fuel which will be adjusted annually, if any, on July 1st of each subsequent year based on the Consumer Price Index. A tax rate of 7.5 cents per gallon on diesel fuel was also effective beginning July 1, 2019. The first 19 cents per gallon on motor fuel and an additional 2.5 cents per gallon on diesel fuel is collected and distributed in accordance of the Illinois Motor Fuel Tax fund (Attachment B). All of the diesel fuel differential goes into the state construction fund. \$15 million per year from this fund is used to fund the Township Bridge Program. After administrative deductions approximately 84% of the 19.0 cents per gallon gasoline tax remains to be split between the state and local agencies. The local share of the balance is 54.4% with 18.27% of that going to counties under 1 million in population. The second 19 cents per gallon on motor fuel and the 7.5 cents per gallon on diesel fuel is collected and distributed in accordance with the Transportation Renewal Fund (Attachment A). The local share of the Transportation Renewal Fund is 32% and counties under 1 million population receive 18.27%. LaSalle County receives approximately .1548% of these. The average driver traveling 15,000 miles per year and getting 20 mpg fuel economy will pay \$285.00 in Illinois MFT. Of this amount approximately \$0.44 will be distributed to LaSalle County. In 2024, LaSalle County collected approximately \$2,897,191 in MFT from both funds. Permissible uses of MFT are set by state law and IDOT administrative policy. LaSalle County uses MFT to pay for contract maintenance and construction projects, materials, and for the majority of employee wages. All expenditures of MFT must be approved by IDOT. However, by state statute the County Engineer is a deputy of IDOT and LaSalle County operates under Agreements of Understanding which expedite the programming and use of MFT funds. Agreements of Understanding are entered into at IDOT's discretion with counties whose County Engineer's office has demonstrated that it is adequately organized, staffed, equipped and financed to satisfactorily discharge the duties and requirements of the Illinois Highway Code.

The **County Consolidated Program** provides \$21.8 million per year for distribution to all counties except Cook. The counties share equally \$8 million of the funds with the remaining portion distributed using the MFT formula. The 2024 allotment of \$488,612 was received from this program. This money must be spent under the same rules and regulations as MFT.

Truck Access Route Program is a competitive program that provides state monies for specific highway improvements. The funds are used to increase pavement widths and thicknesses and to make intersection improvements. The highways become Class III truck routes and are used to improve access for farm and commercial trucking. For FY 2022 Truck Access Route Program, the Highway Department submitted an application for CH 15 from CH 6 to Livingston County and received an award of \$859,400. For FY 2023 Truck Access Route Program, the Highway Department submitted an application for CH 41 from Earlville to DeKalb County and received an award of \$255,650. For FY 2024 Truck Access Route Program, the Highway Department submitted an application for CH 2 from CH 22 to US 52 and received an award of \$389,700.

COUNTY FUNDS

County funds used by the Highway Department derived from the county property tax levy are the County Highway Fund, Special Tax Matching Fund, and County Bridge Fund. The uses and maximum rates for these levies are set by the Highway Code.

Revenues from the **County Highway** tax are used for the purpose of constructing and maintaining county highways including payment for lands, buildings, equipment, materials and labor for such purposes. The maximum rate without referendum for such tax is \$0.10/\$100. Monies derived from this tax must be deposited in the County Highway Fund and can be used for no other purpose. In 2024, the County Highway tax levy was \$3,202,825.

Revenues from the **Special Matching** tax are used for engineering and right-of-way costs, utility adjustments, and construction and maintenance costs from federal aid projects and motor fuel tax sections on county highways. No equipment or operating costs can be paid from this fund. The maximum rate for such tax is \$0.05/\$100. Monies derived from this tax must be deposited in the Special Tax Match fund and can be used for no other purpose. In 2024, the Special Matching tax levy was \$1,601,924.

Revenues from the **County Bridge** tax are used for the construction and maintenance of bridges, culverts, drainage structures, grade separations and approaches on county highways. These funds can also be used for joint projects with townships, municipalities and other counties meeting certain criteria. Monies derived from this tax are deposited in the County Bridge Fund. The maximum rate for such tax is \$0.05/\$100. In 2024, the County Bridge Tax levy was \$1,601,924.

REIMBURSEMENTS & MISCELLANEOUS

The Highway Department receives reimbursements from townships, municipalities and other counties for their share of joint projects; materials and services provided to other departments; and engineering fees. Additional revenues are derived from state income in lieu of property tax receipts, interest income, moving permits, fines, and restitution for damage.

TOWNSHIP FUNDS

The Highway Department administers MFT funds and Township Bridge Program (TBP) funds for the 37 townships of LaSalle County (the most townships of all counties in the state). Approximately \$3,241,443 was collected in 2024 in the Township MFT fund and \$1,203,554 in the TBP fund.

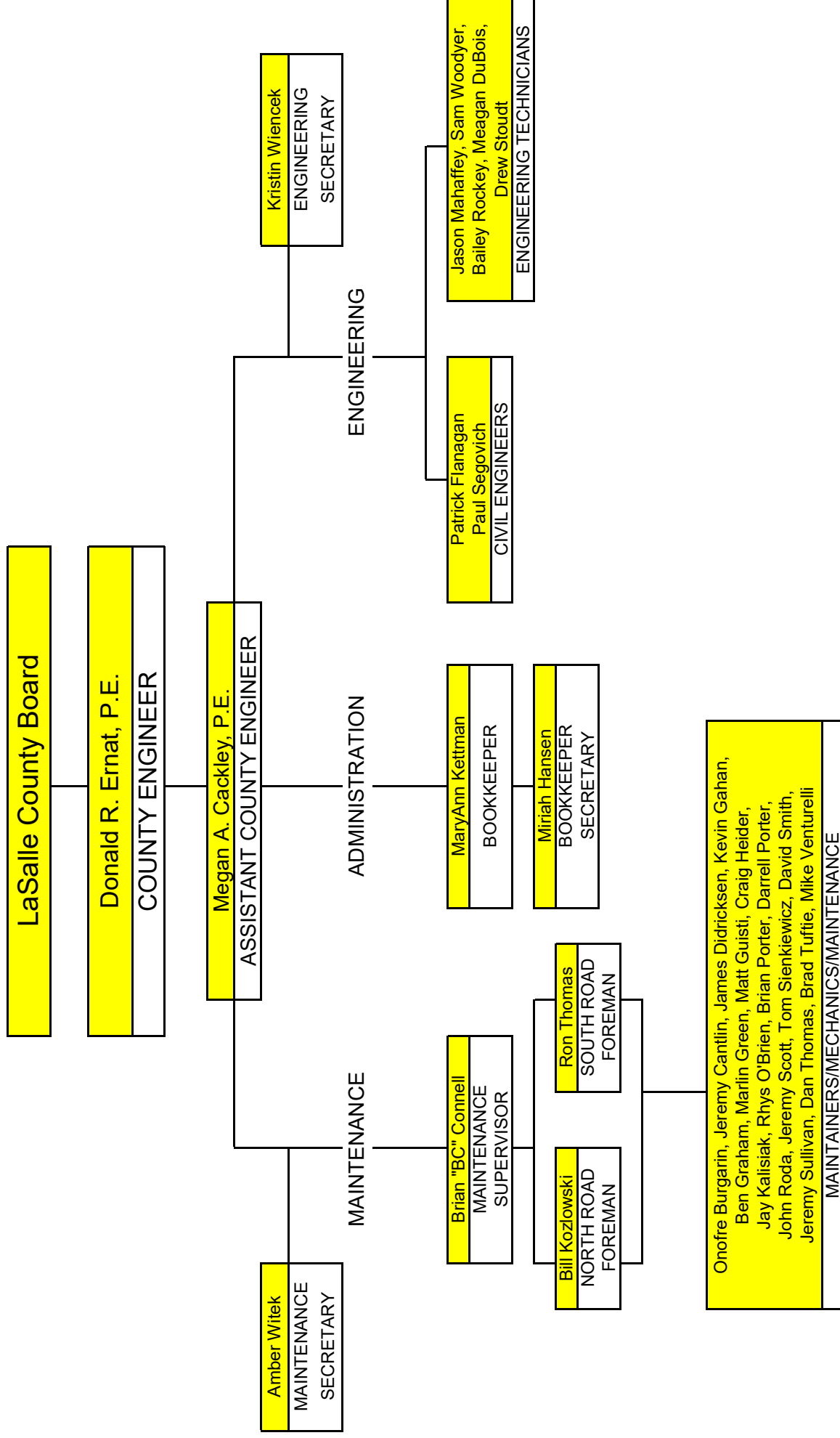
As always please feel free to contact me with questions and concerns for the Department.

Respectfully submitted,

A handwritten signature in blue ink, appearing to read "Donald R. Ernat". The signature is stylized and cursive.

Donald R. Ernat, P.E.
County Engineer

LaSalle County Highway Department - Organizational Chart



Preface

County Engineer’s Message

LaSalle County Highway Department Organizational Chart

Table of Contents

LaSalle County Statistics 1
2024 Maintenance Report..... 2-4
2024 County Highway Construction Program..... 5-7
2024 Township Highway Construction Program 8-14
2024 Bridge & Culvert Construction Program..... 15-18
2024 Utility Permits and GIS Mapping / Database 19-21

Attachments

Attachment “A” – Transportation Renewal Fund Distribution

Attachment “B” – Illinois Motor Fuel Tax Distribution

Attachment “C” – 2024 County Highway Program

Attachment “D” – 2024 Township Highway Program

Attachment “E” – 2024 Bridge and Culvert Program

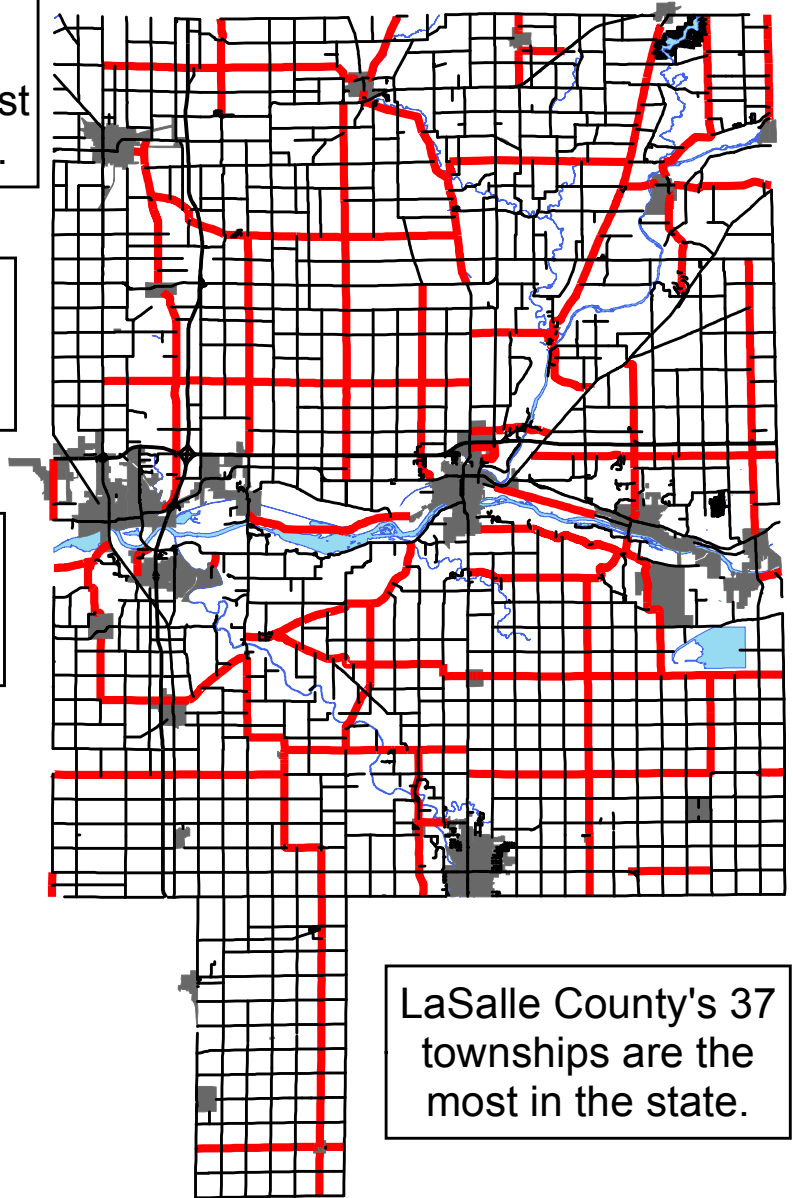
LaSalle County Statistics

LaSalle County has an area of 1134 square miles. In Illinois, only McLean County is larger with 1184 square miles.

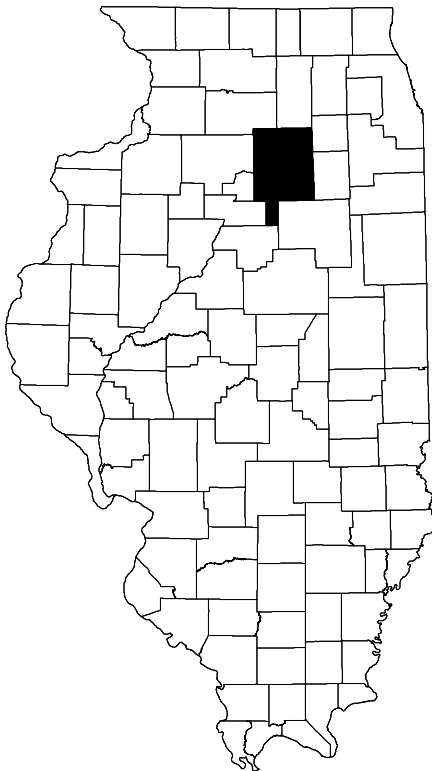
The 2020 Census Bureau Population Estimate for LaSalle County is 109,658. The 17th largest among the 102 counties in Illinois.

There are 363.46 miles of county highway in LaSalle County. Only Cook County has more.

There are 78 major structures on the LaSalle County highway system, the 6th most in Illinois.



LaSalle County's 37 townships are the most in the state.



The Road District highways in LaSalle County total 1468.59 miles, the 5th highest in Illinois.

There are 228 major structures on LaSalle County Road District highways, the 8th highest in Illinois.

2024 Maintenance Report

Maintenance Supervisor – Brian Connell

The Maintenance Department completed the following projects in addition to our routine maintenance program.

Dura-Patching

The Maintenance Department applied 300 tons of CM-16 (3/8” chips) mixed with 4,376.43 Gallons of HFE-90 emulsion, known as *Dura-Patching*, which was done in advance of the seal coat program. These products help prevent the occurrence of potholes by sealing the surface cracks and preventing moisture from reaching the road base and to seal distressed areas of pavement. We have intermittently patched various other county roads also. The cost of these materials totaled \$15,197.79. *Dura-Patching* included C.H. 5, C.H. 6, C.H. 11, C.H. 15, C.H. 16, C.H. 19, C.H. 29, C.H. 30, C.H. 38, C.H. 44, C.H. 45, C.H. 51, C.H. 57, C.H. 60, C.H. 64, C.H. 66.

Mowing/Brush & Tree Removal

During the summer, the entire county highway system was mowed two times with a shoulder cut. The area from the edge of the road to the bottom of the ditch is mowed for visibility, safety, and drainage considerations. An additional full right-of-way cut was made on the complete system prior to winter in order to minimize the problem of drifting snow, to control brush and noxious weeds, and to improve drainage. Tree removal around and under many bridges took place countywide this year. Our ongoing vegetation management program consists of spraying a sterilant to areas under our guardrail sections each year. This program keeps the areas clear of brush and enhances visibility. The Maintenance Department has eight licensed Public Operators & two licensed Public Applicators as required by the *Illinois Department of Agriculture-Bureau of Environmental Programs*.

Shoulder and Ditch Work/Drainage

The Maintenance Department purchased approximately \$22,728.86 of drainage culverts for county and township highway maintenance. In addition, the Maintenance Department re-ditched areas to improve drainage countywide. Other various ditching jobs included C.H. 1, C.H. 2, C.H. 3, C.H. 4, C.H. 5, C.H. 6, C.H. 8, C.H. 9, C.H. 13, C.H. 14, C.H. 19, C.H. 21, C.H. 22, C.H. 25, C.H. 29, C.H. 30, C.H. 31, C.H. 32, C.H. 33, C.H. 36, C.H. 38, C.H. 41, C.H. 42, C.H. 43, C.H. 44, C.H. 51, C.H. 55, C.H. 57, C.H. 62, and C.H. 66. Open-cut crossroad culverts with road closures completed by the Maintenance Department include C.H. 51.

The Maintenance Department also completed major shoulder stone applications on County Highways 5, 6, 8, 9, 10, 19, 30, 43, 44, and 57 along with minor additions on other various County roads using over 6,913 tons of shoulder gravel (CA-6) at a final cost of \$196,951.37.

Snow Removal

The 2023 - 2024 snow season was average in comparison with 20 snow events. For the season, we applied over 2,908 tons of salt/sand mix for snow and ice control. The cost of salt/sand mix alone was \$128,265.09. Our total cost for labor, material, and equipment for snow removal was approximately \$486,014.41.

Bridge and Guard Rail Maintenance

The Maintenance Department began performing minor maintenance procedures to our county bridge system. These procedures include, but are not limited to painting girders, cleaning bearing pads, rockers and bearing seats, repairing wingwalls and backwalls and installing riprap to structures. Additionally, every bridge deck receives an application of Linseed Oil to prevent spalling. These preventative measures ensure that the bridges in our system will perform for many years without the interruption of road closures for major repair.

The Maintenance Department, along with hired contractors, repairs all damaged guardrail. We have collected over \$3,733.02 in 2024 from insurance companies as a result of damage done by their insured to guardrail, pavement, and signs. These monies assist in repairing or replacing the damaged items.

Signs

There are currently 6,352 signs on the county highway system. The Maintenance Department spent \$50,994.20 on materials to replace old, damaged, and vandalized signs and posts. All high traffic and accident-prone areas are reviewed annually, and efforts are made to make them safer.

All county roads are being checked with the reflectometer gun from IDOT once each year to locate defects and changes in retro-reflectivity.

Striping & Pavement Marking

The Maintenance Department along with a contractor re-striped the entire 363 miles of the County Highway system, including railroad crossings, stop bars and pedestrian cross walks. Approximately 22,500 gallons of traffic paint were applied along with 120,000 pounds of glass beads. The cost of the construction and materials for this totaled \$466,475.22.

Vehicle Maintenance

The Highway Department also has a full maintenance shop where all of our heavy equipment, heavy and light duty trucks, and tractors are repaired. All maintenance is now taking place at the Ottawa/Naplate location. The highway department now employs 3 full-time mechanics.

Permits

Our department issued 612 Oversize and Overweight Permits in 2024. A permit fee to administer the permitting process has provided \$47,237.12 of income to the Department.

We also issued 17 new non-commercial entrance permits and processed 14 applications for alterations to existing entrances. Access permit fees collected totaled \$33,310.80 of income to the Department.

2024 County Highway Construction Program

The Engineering Department is responsible for the design and construction of the various county highway sections. The Engineering staff is currently comprised of two Civil Engineers and four Engineering Technicians. All aspects of the design and construction are under the direct supervision of the County Engineer and the Assistant County Engineer.

The **Highway Committee** awarded construction contracts for improvements on approximately **60.8 miles** of county highways. The cost of the awarded work was approximately **14.1 million dollars**.

Attachment “C” of this report is the 2024 County Highway Program Map, showing the locations of the projects described below.

The following chart and descriptions summarize the work involved.

2024 COUNTY HIGHWAY CONSTRUCTION SUMMARY

PROJECT TYPE	COUNTY HIGHWAY	SECTION NUMBER	MILES	CONTRACTOR	AWARDED VALUE	COST TO DATE
SEAL COAT	45, 60	24-00000-01-GM	3.17	PAVEMENT MAINTENANCE SERVICES, INC.	\$87,848.79	\$79,366.28
CAPE SEAL	5,6,11,13,16,18,19,38,44,45,57,60	24-00000-08-GM	25.09	A.C. PAVEMENT STRIPING CO.	\$1,692,567.02	\$1,688,553.16
SKIP PATCH	4,5,10,19,25,32,43,47,54,63	24-00000-05-GM	0.17	ADVANCED ASPHALT COMPANY	\$162,771.00	\$126,662.36
HMA RESURFACE	2	21-00392-00-RS	5.76	D. CONSTRUCTION, INC.	\$1,729,927.70	\$1,737,535.57
HMA WIDEN & RESURFACE	2	21-00392-01-RS	10.10	CURRAN CONTRACTING COMPANY	\$2,100,248.21	\$1,972,562.33
HMA RESURFACE	41	19-00382-00-SM	2.93	ADVANCED ASPHALT COMPANY	\$ 567,219.07	\$570,000.00
HMA RESURFACE	14	23-00408-00-RS	3.64	ADVANCED ASPHALT COMPANY	\$618,360.82	\$ 618,911.61
HMA RESURFACE	15	23-00409-00-RS	0.90	ADVANCED ASPHALT COMPANY	\$191,499.29	\$199,070.71
HMA WIDEN & RESURFACE	15	15-00351-00-WR	9.05	ADVANCED ASPHALT COMPANY	\$ 6,972,036.42	\$ 2,788,814.57
TOTALS =			397.1		\$14,122,478.32	\$9,781,476.59

PROJECT DESCRIPTIONS

Section 24-00000-01-GM, Seal Coat throughout LaSalle County

This project was awarded to Pavement Maintenance Services, Inc. in the amount of \$87,848.79. The work consisted of applying a bituminous seal coat followed by an aggregate wearing surface. This project is 100% complete. The final construction cost was \$79,366.28.

Section 24-00000-08-GM, Cape Seal throughout LaSalle County

This project was awarded to A.C. Pavement Striping Co. in the amount of \$1,692,567.02. The work consisted of constructing a seal coat and a latex modified asphalt surface treatment over an existing bituminous surface to provide a wearing surface for existing bituminous pavements. The project is 100% complete and had a final construction cost of \$1,688,553.16.

Section 24-00000-05-GM, Skip Patch throughout LaSalle County

This project was awarded to Advanced Asphalt Company in the amount of \$162,771.00. The work consisted of fixing bumps on county highways by milling the existing pavement and resurfacing with Hot-Mix Asphalt. The project is 100% complete and had a final construction cost of \$126,662.36.

Section 21-00392-00-RS, County Highway 2 HMA Resurfacing

This contract was awarded to D. Construction, Inc. with an awarded cost of \$1,729,927.70. This work included the construction of a Hot-Mix Asphalt Binder Course, Hot-Mix Asphalt Surface Course and included the replacement of two pipe culverts, repair to one pipe culvert and other miscellaneous work. The project is 100% complete. The final cost of this section was \$1,737,535.57.

Section 21-00392-01-RS, County Highway 2 HMA Widening & Resurfacing

This contract was awarded to Curran Contracting Company with an awarded cost of \$2,100,248.21. This work included the construction of a Hot-Mix Asphalt Binder Course, Hot-Mix Asphalt Surface Course, Hot-Mix Asphalt shoulders, and other miscellaneous work. The project is 100% complete. The final cost of this section was \$1,972,562.33.

Section 19-00382-00-SM, County Highway 41 HMA Resurfacing

This contract was awarded to Advanced Asphalt Company in the amount of \$567,219.07. The work consists of HMA Resurfacing with aggregate wedge shoulders, and other miscellaneous work. The project is 100% complete and had a final construction cost of \$570,000.00.

Section 23-00408-00-RS, County Highway 14 HMA Resurfacing

This contract was awarded to Advanced Asphalt Company in the amount of \$618,360.82. The work consists of Cold Milling and HMA Resurfacing C.H. 14 (Ed Lambert Road). The project is 100% complete and had a final construction cost of \$618,911.61.

Section 23-00409-00-RS, County Highway 15 HMA Resurfacing

This contract was awarded to Advanced Asphalt Company in the amount of \$191,499.29. The work consists of Cold Milling and HMA Resurfacing C.H. 15 (Marseilles Blacktop). The project is 100% complete with the total construction cost of 199,070.71.

Section 15-00351-00-WR, County Highway 15 HMA Widening & Resurfacing

This contract was awarded to Advanced Asphalt Company in the amount of \$6,972,036.42. The work consists of widening the existing roadway to provide 11 ft travel lanes and 2 ft hot-mix asphalt shoulders and a 2 ft aggregate shoulder. Additional work includes the replacement of culverts, pavement markings, shoulder rumble strips, guardrails, and other work along C.H. 15 from 21st Road to the Livingston County line. The project is 40% complete and has been shut down for the winter, with work to resume in the Spring 2025. The current cost completed is \$2,788,814.57.

2024 Township Highway Construction Program

The Engineering Department is also responsible for overseeing the design and construction of various township highway sections.

The **Highway Committee** and the Township Road Commissioners awarded construction contracts for improvements on approximately **158.62 miles** of various township highways. The work totaled over **\$ 6.1 million**.

The Townships pay Engineering Fees to the LaSalle County Highway Department for the design and construction of these sections, and for completing the required paperwork to use Motor Fuel Tax funds on various general maintenance items. The fees collected totaled over \$411,500.

Attachment “D” of this report is the 2024 Township Highway Program Map, showing the locations of the projects described below.

The following charts and descriptions summarize the work involved.

2024 TOWNSHIP HIGHWAY CONSTRUCTION SUMMARY

PROJECT TYPE	MILES	FINAL COST	ENGINEERING FEES RECEIVED
SEAL COAT	127.14	\$2,532,366.98	\$156,563.47
A-3	7.57	\$584,083.67	\$37,101.14
FOB PIT AGGREGATE	N/A	\$84,408.45	\$4,527.25
AGGREGATE RESURFACE	2.64	\$160,000.21	\$8,156.85
SKIP PATCH	0.32	\$122,163.38	\$7,677.82
EQUIPMENT RENTAL	N/A	* \$116,739.79	* \$3,502.20
MICRO-SURFACING	0.40	\$17,024.70	\$1,021.48
CAPE SEAL	17.53	\$1,239,257.00	\$72,595.61
HMA RESURFACE	3.02	* \$1,232,000.00	* \$120,371.16
TOTALS =	158.62	* \$6,088,044.18	* \$411,516.98

*COST TO DATE

2024 Seal Coat Program

Seal Coat work consists of applying a bituminous seal coat followed by an aggregate wearing surface. This application is generally performed on previously sealed township roads or a roadway with a bituminous surface. This procedure waterproofs, strengthens and prolongs the life of the existing bituminous surface.

2024 SEAL COAT SUMMARY

CONTRACTOR: PAVEMENT MAINTENANCE SOLUTIONS INC.			
TOWNSHIP	MILES	AWARDED VALUE	FINAL COST
ADAMS	0.57	\$12,904.05	\$12,381.16
BRUCE	2.87	\$59,205.87	\$60,203.68
DEER PARK	2.24	\$46,020.32	\$43,077.18
DIMMICK	4.67	\$90,770.07	\$89,823.60
EAGLE	3.53	\$78,580.89	\$70,694.42
EARL	4.12	\$85,337.95	\$77,902.77
EDEN	14.01	\$259,195.33	\$230,267.59
FARM RIDGE	7.93	\$143,411.64	\$127,673.54
FREEDOM	6.18	\$121,945.41	\$113,787.51
GROVELAND	2.07	\$43,851.27	\$39,687.75
HOPE	8.58	\$166,577.64	\$163,480.14
LASALLE	0.25	\$4,717.45	\$4,568.92
MANLIUS	3.47	\$90,575.74	\$78,208.20
MENDOTA	2.64	\$66,435.42	\$63,303.13
MERIDEN	0.55	\$14,638.42	\$39,516.90
MILLER	3.91	\$77,157.85	\$67,302.00
MISSION	4.05	\$90,865.04	\$84,086.72
NORTHVILLE	4.69	\$111,077.69	\$117,368.74
OPHIR	8.24	\$175,036.83	\$167,675.92
OSAGE	11.77	\$234,920.88	\$216,576.41
OTTER CREEK	5.07	\$170,171.43	\$157,511.45
RICHLAND	3.84	\$76,159.93	\$68,483.81
RUTLAND	6.28	\$147,966.04	\$138,131.18
TROY GROVE	6.24	\$151,095.76	\$139,100.13
UTICA	1.22	\$26,723.84	\$10,605.91
VERMILLION	2.07	\$35,942.98	\$30,102.74
WALTHAM	5.43	\$118,693.41	\$107,281.69
CITY OF STREATOR	0.65	\$14,299.52	\$13,563.79
TOTALS =	127.14	\$2,714,278.67	\$2,532,366.98
ENGINEERING FEES RECEIVED =		\$80,999.37	\$75,564.10
		\$156,563.47	

2024 Bituminous Surface Treatment, A-3

A-3 projects consist of applying 3 layers of a bituminous material followed by an aggregate wearing surface. These projects are generally performed to upgrade lower volume aggregate township roads.

2024 A-3 SUMMARY

CONTRACTOR: PAVEMENT MAINTENANCE SOLUTIONS INC.				
TOWNSHIP	SECTION NUMBER	MILES	AWARDED VALUE	FINAL COST
DIMMICK	24-07000-10-GM	0.10	\$10,608.61	\$10,426.92
DIMMICK	24-07000-10-GM(NON)	1.42	\$117,940.91	\$106,221.54
EAGLE	24-08000-10-GM(NON)	0.95	\$68,961.17	\$69,824.28
MENDOTA	24-19000-10-GM(NON)	0.99	\$95,387.23	\$82,953.31
MERIDEN	24-20000-10-GM	0.57	\$57,179.54	\$47,337.55
MISSION	24-22000-10-GM(NON)	1.69	\$165,041.46	\$140,683.94
RUTLAND	23-30000-10-GM(NON)	1.82	\$134,196.85	\$124,291.70
WALLACE	24-36000-10-GM	0.03	\$3,305.15	\$2,344.43
TOTALS =		7.57	\$652,620.92	\$584,083.67
ENGINEERING FEES RECEIVED =			\$19,578.63	\$17,522.51
			\$37,101.14	

2024 F.O.B. Pit Aggregate

F.O.B. stands for Freight on Board and involves the Township hauling aggregate from a quarry with their own forces and equipment to repair and maintain the township roadways.

2024 F.O.B. PIT AGGREGATE SUMMARY

TOWNSHIP	SECTION NUMBER	FINAL COST
DEER PARK	24-06000-02-GM	\$14,634.72
GRAND RAPIDS	24-14000-03-GM	\$68,654.93
VERMILLION	24-35000-02-GM	\$1,118.80
TOTAL =		\$84,408.45
ENGINEERING FEES RECEIVED =		\$4,527.25

2024 Aggregate Resurface

This work consists of the townships directly hiring (less than \$30,000) or bidding projects for a contractor to haul and spread additional aggregate on township gravel roads.

2024 AGGREGATE RESURFACE SUMMARY

TOWNSHIP	SECTION NUMBER	MILES	CONTRACTOR	AWARDED VALUE	COST TO DATE
EAGLE	24-08000-02-GM	N/A	EAGLE TOWNSHIP	N/A	\$19,783.84
GROVELAND	24-15000-02-GM	N/A	GROVELAND TOWNSHIP	N/A	\$9,051.11
GROVELAND	24-15000-03-GM	2.64	ILLINOIS VALLEY EXCAVATING, INC.	\$111,894.81	\$111,450.32
RICHLAND	24-29000-02-GM	N/A	RICHLAND TOWNSHIP	N/A	\$19,714.94
TOTALS =		2.64		\$111,894.81	\$160,000.21
ENGINEERING FEES RECEIVED =				\$3,356.84	\$4,800.01
				\$8,156.85	

2024 Skip Patch

Skip patching consists of milling and replacing hot-mix asphalt areas of township roads that need repair to the proper slope and thickness to improve the ride and overall performance.

2024 SKIP PATCH SUMMARY

CONTRACTOR: ADVANCED ASPHALT COMPANY				
TOWNSHIP	SECTION NUMBER	MILES	AWARDED VALUE	FINAL COST
GROVELAND	24-15000-05-GM	0.07	\$26,574.00	\$27,432.40
OTTER CREEK	24-27000-05-GM	0.17	\$84,310.00	\$73,358.18
TROY GROVE	24-33000-05-GM(NON)	0.08	\$22,880.00	\$21,372.80
TOTALS =		0.32	\$133,764.00	\$122,163.38
ENGINEERING FEES RECEIVED =			\$4,012.92	\$3,664.90
			\$7,677.82	

2024 Equipment Rental

This work consists of the townships using their own equipment for township activities and being reimbursed by MFT for the use of their equipment.

2024 EQUIPMENT RENTAL SUMMARY

TOWNSHIP	FINAL COST
DEER PARK	\$10,824.20
FALL RIVER	\$19,515.47
GRAND RAPIDS	\$69,677.51
MERIDEN	* \$6,973.02
OPHIR	* \$0
RICHLAND	\$9,749.59
TOTAL =	* \$116,739.79
ENG FEES RECEIVED =	* \$3,502.20

*COST TO DATE

2024 Micro-Surfacing Projects

This work consists of adding a latex modified asphalt surface treatment over an existing bituminous surface. This process extends the life of the existing pavement and provides an all-weather, long-lasting surface that offers skid resistance and improved handling characteristics for the traveling public.

2024 MICRO-SURFACING SUMMARY

CONTRACTOR: AC PAVEMENT STRIPING CO.				
TOWNSHIP	SECTION NUMBER	MILES	AWARDED VALUE	FINAL COST
LASALLE	24-17000-07-GM	0.40	\$17,024.70	\$17,024.70
TOTALS =		0.40	\$17,024.70	\$17,024.70
ENGINEERING FEES RECEIVED =			\$510.74	\$510.74
			\$1,021.48	

2024 Cape Seal Projects

This work consists of adding a seal coat and a latex modified asphalt surface treatment over an existing bituminous surface. This process will significantly extend the life of the existing pavements. An all-weather, long-lasting surface is created that offers skid resistance and improved handling characteristics for the traveling public.

2024 CAPE SEAL SUMMARY

CONTRACTOR: AC PAVEMENT STRIPING CO.				
TOWNSHIP	SECTION NUMBER	MILES	AWARDED VALUE	FINAL COST
ADAMS	24-01000-08-GM	3.06	\$193,577.09	\$195,127.70
BROOKFIELD	24-03000-08-GM	6.13	\$373,451.50	\$431,207.60
DAYTON	24-05000-08-GM	1.33	\$102,609.22	\$98,248.31
EARL	24-09000-08-GM	1.09	\$66,700.42	\$66,747.20
MERIDEN	24-20000-08-GM	0.27	\$16,860.22	\$16,432.28
NORTHVILLE	24-23000-08-GM	1.34	\$92,581.17	\$96,088.97
SOUTH OTTAWA	24-32000-08-GM	1.91	\$163,295.49	\$164,202.46
WALLACE	24-36000-08-GM	1.00	\$83,591.67	\$82,343.31
CITY OF EARLVILLE	-	1.40	\$87,929.78	\$88,859.17
TOTALS =		17.53	\$1,180,596.56	\$1,239,257.00
ENGINEERING FEES RECEIVED =			\$35,417.90	\$37,177.71
			\$72,595.61	

2024 Hot-Mix Asphalt Projects

This work consists of adding a hot-mix asphalt binder course and hot-mix asphalt surface course to an existing roadway surface, aggregate or bituminous. Hot-mix asphalt increases the roads ability to withstand heavy traffic loads, has a design life of 20 years, improves smoothness, drainage and skid resistance.

2024 HMA SUMMARY

TOWNSHIP	SECTION NUMBER	MILES	CONTRACTOR	AWARDED VALUE	COST TO DATE
MILLER	24-21410-00-SM(NON)	2.00	D. CONSTRUCTION, INC.	\$393,838.50	* \$392,000.00
OTTAWA	22-26398-00-RS	1.02	ADVANCED ASPHALT COMPANY	\$1,075,440.45	* \$840,000.00
TOTALS =		3.02		\$1,469,278.95	* \$1,232,000.00
ENGINEERING FEES RECEIVED =				\$58,771.16	* \$61,600.00
				* \$120,371.16	

*COST TO DATE

Section 24-21410-00-SM(NON), N. 32nd Rd HMA Resurfacing, Miller Township

This work was awarded to D. Construction, Inc. in the amount of \$393,838.50. The project included the application of hot-mix asphalt (HMA) binder to correct crown deficiencies, HMA surface course material and aggregate shoulders were then constructed. This project is 100% complete and has a final cost of \$392,000.

Section 22-26398-00-RS, N. 2803rd Rd HMA Resurfacing, Ottawa Township

This work was awarded to Advanced Asphalt Company in the amount of \$1,075,440.45. The project included milling the existing deteriorated bituminous surface, constructing a hot-mix asphalt binder course to correct crown deficiencies, and a hot-mix asphalt surface course, widening for a hot-mix asphalt shoulder and aggregate shoulders, along with other miscellaneous construction. The project is 100% complete and has a final cost of \$840,000.

2024 Bridge and Culvert Construction Program

The Engineering Department is responsible for the design, construction and inspection of the various county and township culverts, as well as the review of consultant designed and the construction inspection of the county and township bridge projects.

During the past year, the Highway Committee has awarded numerous bridge and culvert projects amounting to approximately **\$ 6.4 million dollars** in **county** construction and **\$ 586 thousand dollars** in **township** construction.

Attachment “**E**” of this report is a map of the county and township bridge and culvert projects completed during the past year.

2024 COUNTY BRIDGE AND CULVERT CONSTRUCTION SUMMARY

COUNTY HIGHWAY	SECTION NUMBER	% COMPLETE	CONTRACTOR	AWARDED VALUE	COST TO DATE
57	15-00760-00-BR	100	D. CONSTRUCTION, INC.	\$4,537,911.93	\$4,662,114.69
9	20-00824-00-DR	100	SJOSTROM & SONS, INC.	\$585,962.10	\$588,284.44
8	22-00845-00-DR	100	ILLINOIS VALLEY EXCAVATING, INC.	\$179,222.42	\$177,980.73
33	23-00863-00-DR	100	J.C. DILLON, INC.	\$40,304.00	\$39,528.80
E 0 TH RD	23-00856-00-BR	80	GILLAN CONSTRUCTION, LLC	\$553,903.50	\$406,711.66
33	23-00859-00-DR	0	D. CONSTRUCTION, INC.	\$493,454.22	\$0
TOTALS =				\$6,390,758.17	\$5,874,620.32

PROJECT DESCRIPTIONS

Section 15-00760-00-BR, C.H. 57 over the Vermillion River – Red, White & Blue Bridge

This project was awarded to D. Construction, Inc. in the amount of \$4,537,911.93. The project consists of replacing S.N. 050-3150, a three span (90'-0"; 110'-0"; 90'-0") concrete slab on steel plate girders, with a three span (80'-0"; 150'-0"; 80'-0") reinforced concrete slab on composite steel plate girders. The new structure will be supported on integral abutments and drilled shaft piers. This project includes in-stream work, scour protection and stream bed armament, ditch work, and approach roadway work thereto. The road was closed to traffic in July 2023 to begin construction and re-opened in November 2024 when construction was completed. The project is 100% complete with a final cost of \$4,662,114.69.

Section 20-00824-00-DR, C.H. 9 over Pecumsaugan Drainage Ditch

This project was awarded to Sjostrom and Sons, Inc. in the amount of \$585,962.10. The work consists of removal of existing single span PPC Deck Beam Bridge and replacing with a double barrel (10'x11') cast-in-place concrete box culvert. The project is 100% complete with a total cost of \$588,284.44.

Section 22-00845-00-DR, C.H. 8 over Unnamed Tributary to Illinois River

This project was awarded to Illinois Valley Excavating, Inc. in the amount of \$179,222.42. The work consists of the construction of a single (8'x4') precast concrete box culvert with cast-in-place concrete end sections, HMA pavement and aggregate shoulder construction, earthwork, riprap, and other related items. The project is 100% complete with a total cost of \$177,980.73.

Section 23-00863-00-DR, C.H. 33 over Unnamed Waterway

This project was awarded to J.C. Dillon, Inc. in the amount of \$40,304.00. The project consists of removing 10' of the existing 36" CMP Culvert and lining the 93' remaining. The project is 100% complete with an end total of \$39,528.80.

Section 23-00856-00-BR, E 0th Road over Brush Creek

This project was awarded to Gillan Construction, LLC in the amount of \$553,903.50. The project consists of replacing an existing 24' single span bridge, with a triple barrel (12'x12') cast-in-place concrete box culvert on Brush Creek. The project is substantially complete with the roadway opening in December 2024 and incidental items will be finalized in Spring 2025.

Section 23-00859-00-DR, C.H. 33 at E 11th Road over Pecumsaugan Creek

This project was awarded to D. Construction, Inc. in the amount of \$493,454.22. The project consists of the removal of the existing single (11'x7') elliptical CMP culvert and replacing it with a single (12'x7') cast-in-place concrete box culvert. The work also includes placing riprap, HMA resurfacing, earthwork and landscaping. The work may begin after May 1, 2025, and shall be completed by August 15, 2025.

The following chart summarizes the township bridge & culvert construction completed in 2024.

2024 TOWNSHIP BRIDGE AND CULVERT CONSTRUCTION SUMMARY

TOWNSHIP	SECTION NUMBER	PROJECT TYPE	% COMP	CONTRACTOR	COUNTY AID	AWARDED VALUE	COST TO DATE
WALLACE / FREEDOM (N.36)	18-36810-00-DR	CULVERT REPLACEMENT	100	ILLINOIS VALLEY EXCAVATING, INC.	*	\$177,873.00	\$164,372.70
GRAND RAPIDS (E 21 ST RD)	24-14865-00-DR	CULVERT REPLACEMENT	100	ILLINOIS VALLEY EXCAVATING, INC.	50:50	\$154,328.00	\$150,328.76
EDEN & FARM RIDGE	24-10864-00-BR 24-12864-00-BR	TIMBER PILE REPAIRS	0	D. CONSTRUCTION, INC.	50:50	\$253,300.00	\$0
TOTALS =						\$585,501.00	\$314,701.46
ENGINEERING FEES RECEIVED =						\$20,934.96	\$18,601.21
						\$39,536.17	

* 80% TBP / 10% TOWNSHIP (SPLIT) / 10% COUNTY BRIDGE AID

PROJECT DESCRIPTIONS

Section 18-36810-00-DR, N 36th Rd over Buck Creek – Wallace & Freedom Townships

This project was awarded to Illinois Valley Excavating, Inc. in the amount of \$177,873.00. The project consists of removal of the existing structure and construction of a double (10'x4') precast concrete box culvert with precast concrete end sections, skewed 30° right ahead. Also included are removal and disposal of unsuitable material, earth excavation, channel protection, erosion control measures, seeding, reconstruction of 150 feet of roadway with aggregate surface course and aggregate shoulders and other related work. The project is 100% complete with a final construction cost of \$ \$164,372.70.

Section 24-14865-00-DR, E 21st Rd – Grand Rapids Township

This project was awarded to Illinois Valley Excavating, Inc. in the amount of \$154,328. The project consisted of the construction of a precast 10'x10' concrete box culvert with precast end sections, aggregate roadway construction, earthwork, riprap and other related items. The project is 100% complete with a final construction cost of \$150,328.76.

Timber Pile Repairs, Eden & Farm Ridge Townships

The projects were awarded to D. Construction, Inc. in the amount of \$253,300.00. The projects included repairing deteriorated timber piling at numerous township bridges throughout LaSalle County. The project will be constructed in 2025.

BRIDGE INSPECTIONS

The County Highway Department is responsible for mandated maintenance, safety and special inspections for all county and township bridge length structures. Resultant data is submitted to IDOT for inclusion in the Structure Information Management System (SIMS). Routine maintenance and safety inspections have also been implemented on a number of large, non-NBIS (National Bridge Inspection Standard) length County and Township structures.

In 2024, the following bridge inspections were performed:

2024 BRIDGE INSPECTION SUMMARY

INSPECTION TYPE	FREQUENCY	COUNTY	TOWNSHIP
Routine Maintenance & Safety	Biennial	6	154
Scour Critical	Major Flood Event	0	0
Special (As mandated by IDOT)	Yearly or Less	0	5
Non-NBIS Length (20' or Less)	Quadrennial	49	18
TOTAL =		55	177

The County contracted Willett, Hofmann & Associates to perform the required routine township bridge inspections. The Highway Department performs the routine county bridge inspections, and the scour critical and special inspections for both the county and township structures.

2024 Utility and Roadway Inventory Review

UTILITY PERMITS

The Highway Department reviews permits for utility companies that construct facilities within or across the county right-of-way. These permits are approved by the Highway Committee and are summarized below.

2024 UTILITY PERMIT SUMMARY

UTILITY COMPANY	# ISSUED
Ameren	4
AT&T	4
City of Earlville	1
City of Grand Ridge	1
Comcast Cable	1
ComEd	2
Energy Specialists	1
Frontier	4
Leonore Telephone	1
McNabb Telephone	1
Micro Communications	1
MTCO	1
Nicor	7
Opperman Construction	1
Surf Internet	10
Total =	40

The majority of the permits were associated with fiber optic installation, gas service installations, and power pole upgrades. The remaining permits were primarily associated with routine maintenance, relocations due to County and Township construction projects, and customer service drops.

RAILROAD CROSSING UPGRADES

The Highway Department remains proactive in submitting railroad crossing applications for improvement to the Illinois Commerce Commission (ICC) and Illinois Department of Transportation (IDOT) in hopes of obtaining Grade Crossing Protection Funds (GCPF). The Grade Crossing Protection Fund was created to assist counties, townships and municipalities in paying for safety improvements at highway-rail crossings on local roads and streets. The following projects have been included in the ICC's 5-year plan for GCPF:

FY 2023 FUNDING:

N 41st Road at Union Pacific in Ophir Township – install roadway gates; install new automatic flashing light signals.

E 9th Road at Union Pacific in Ophir Township – close crossing with GCPF incentive. The adjacent property owner is not willing to give up the land that would be required to realign E 9th Rd to close the crossing, and the Township Board voted down the option to dead end E 9th Rd; therefore, this project will not be occurring.

County Highway 21 at Illinois Railway in Village of Wedron – install roadway gates; modify automatic flashing light signals.

County Highway 29 at Norfolk Southern in Village of Kangley – install roadway gates; install new automatic flashing light signals.

FY 2024 FUNDING:

N 3809th Road at Union Pacific in Ophir Township – close public crossing with GCPF incentive.

FY 2026 FUNDING:

County Highway 51 - Old Chicago Rd at CSX – Reconstruct flashing lights and gates.

Projects amount to an estimated \$1,526,077 in Grade Crossing Protection Funds.

SUBDIVISION REVIEW

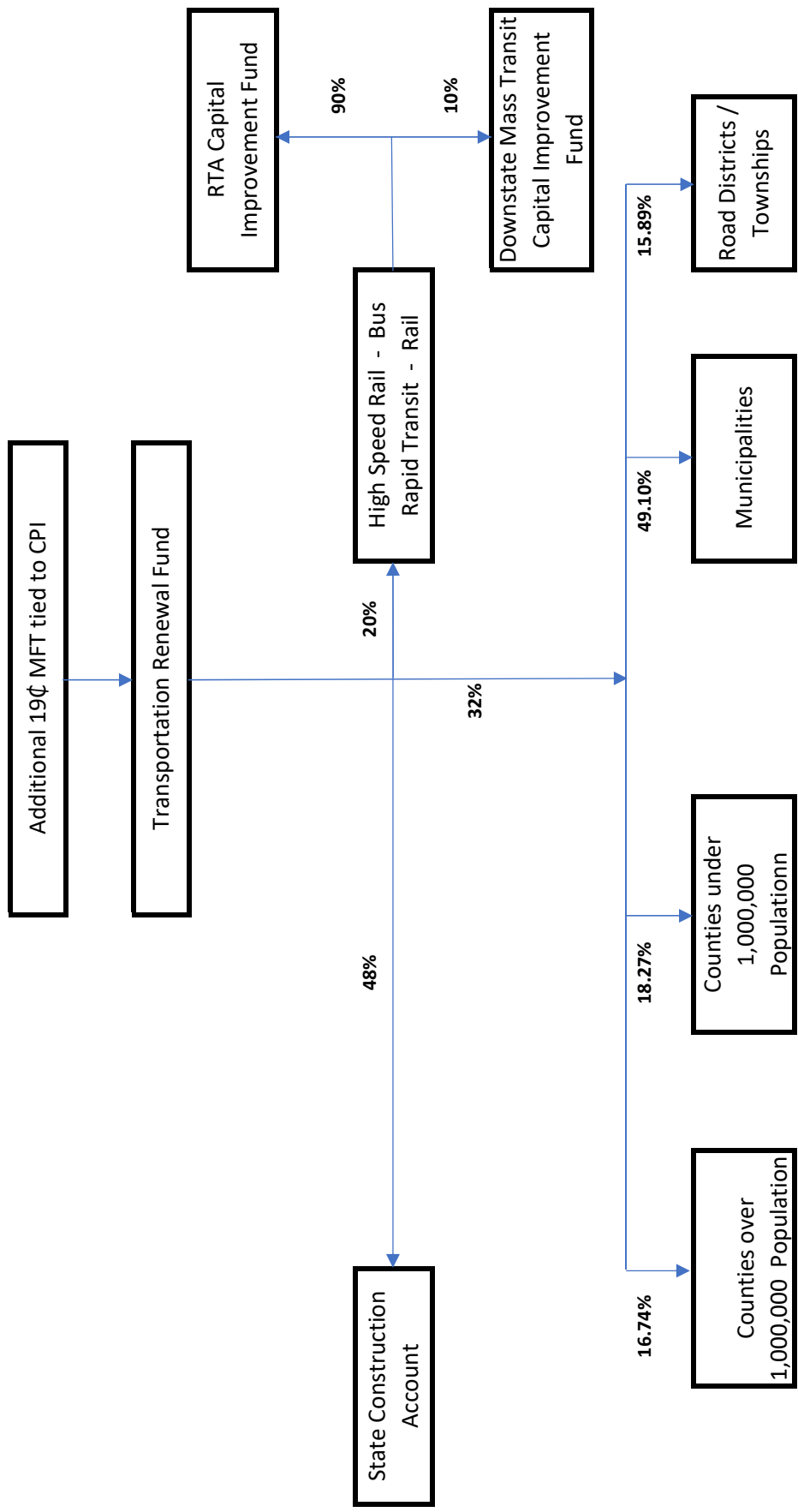
The Highway Department reviews new subdivisions in conjunction with the Enforcement Officer. We review new roadway designs, intersections, and some drainage details for compliance with the Subdivision Ordinance and engineering standards. No new subdivisions were submitted in 2024.

GIS MAPPING / DATABASE

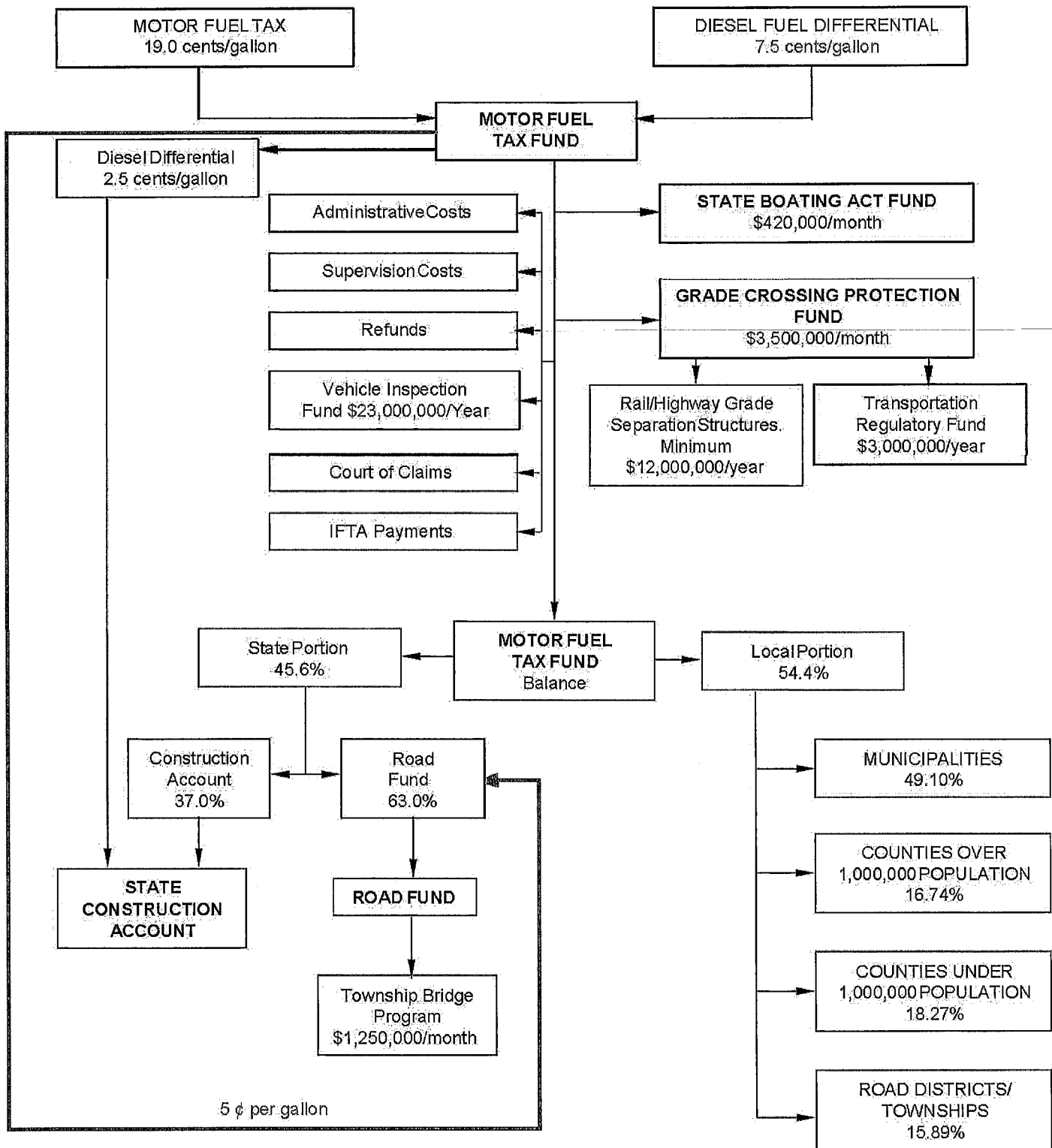
The LaSalle County Highway Department maintains a mapping and recording system in order to allow our staff and other county agencies to more efficiently access and retrieve information. This database is directly linked to our geographic mapping (aerial mapping of LaSalle County), and provides instant access to information for local roads, bridges, boundary lines & limits, addresses, zoning, school districts, legislative districts and much more. Maintenance and updating of our data is an ongoing process that includes generating new layers, modifying existing layers, scanning old plans and linking these and other data to the applicable layers.

Attachment A

Transportation Renewal Fund Distribution



DISTRIBUTION OF THE ILLINOIS MOTOR FUEL TAX FUND



2024 COUNTY HIGHWAY PROGRAM

CH 52 OVER LITTLE INDIAN CREEK
SECTION 20-00830-00-BR

E 0TH OVER BRUSH CREEK
SECTION 23-00856-00-BR

CH 33 OVER UNNAMED DITCH
SECTION 23-00863-00-DR

CH 9 OVER PECUMSAUGAN CREEK
SECTION 20-00824-00-DR

CH 33 OVER BRANCH OF PECUMSAUGAN CREEK
SECTION 23-00859-00-DR

CH 34 OVER CLARK RUN
SECTION 23-00862-00-BR

E 30TH OVER WAUPECAN CREEK
SECTION 23-00855-00-BR

RED WHITE & BLUE BRIDGE
SECTION 15-00760-00-BR

CH 15 OVER PRAIRIE CREEK
SECTION 23-00860-00-BR

LA SALLE COUNTY, ILLINOIS
Donald R. Erat, P.E., County Engineer

Legend

- INTERSTATE HIGHWAYS
- US HIGHWAYS
- STATE HIGHWAYS
- COUNTY HIGHWAYS
- TOWNSHIP HIGHWAYS
- RAILROADS
- TOWNSHIP BOUNDARY
- CORPORATE BOUNDARY

PROJECT TYPE

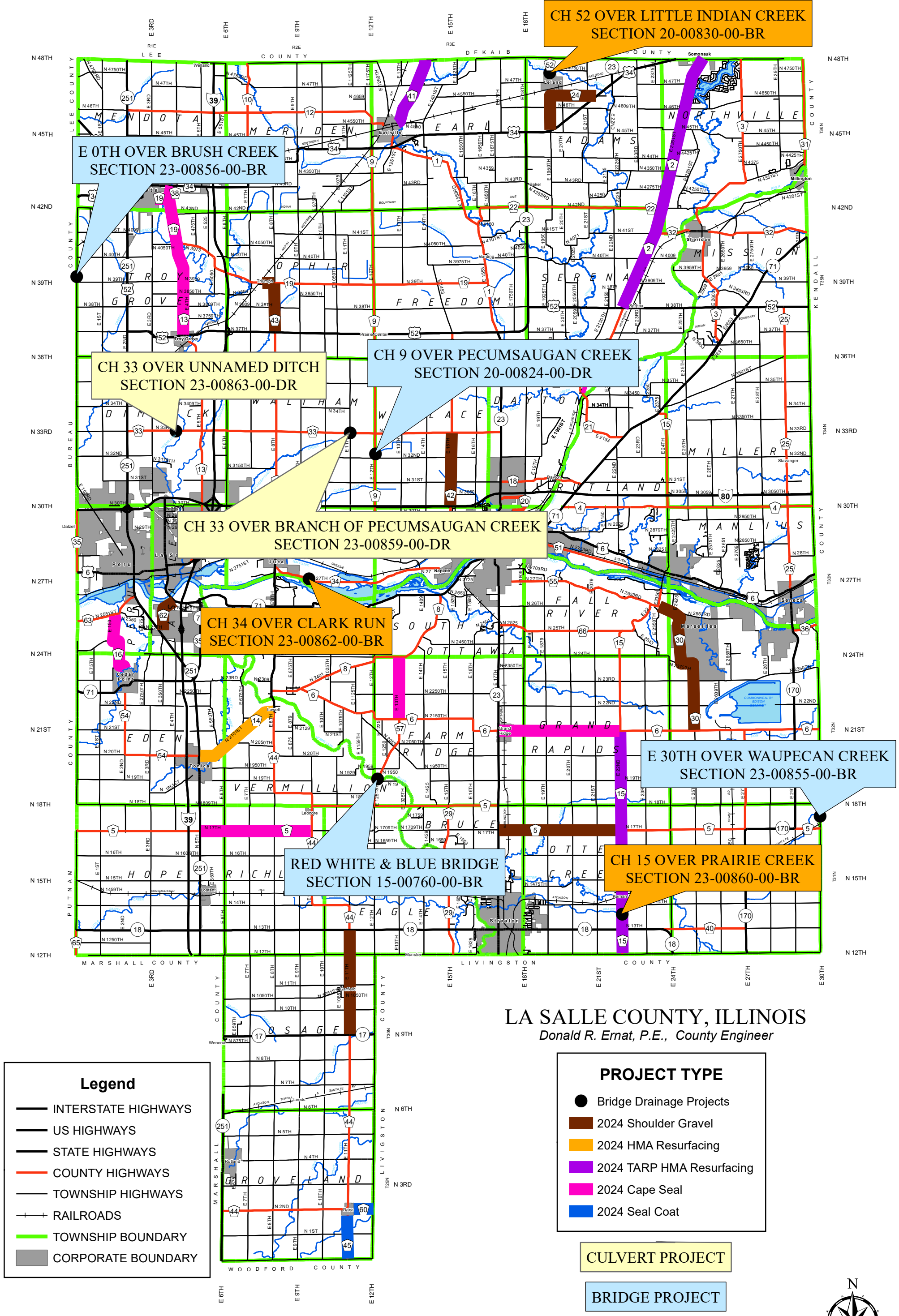
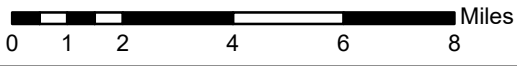
- Bridge Drainage Projects
- 2024 Shoulder Gravel
- 2024 HMA Resurfacing
- 2024 TARP HMA Resurfacing
- 2024 Cape Seal
- 2024 Seal Coat

■ CULVERT PROJECT

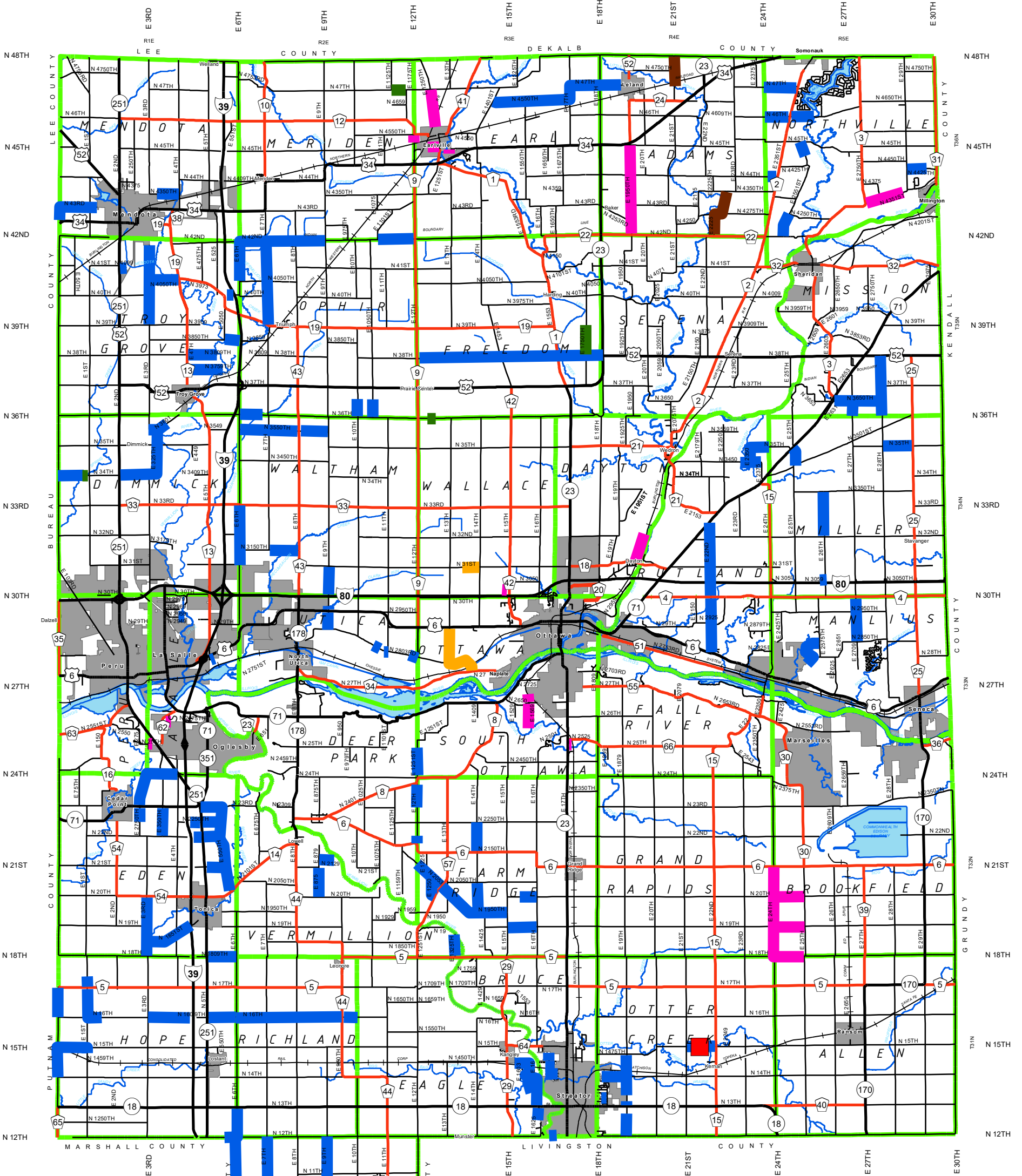
■ BRIDGE PROJECT

■ ENGINEERING PHASE

SAW 8/30/2023



2024 TOWNSHIP HIGHWAY PROGRAM



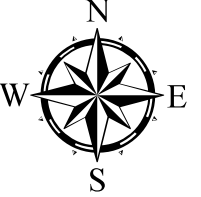
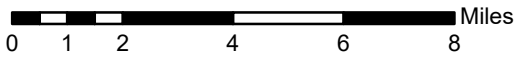
LA SALLE COUNTY, ILLINOIS
 Donald R. Erat, P.E., County Engineer

Legend

- INTERSTATE HIGHWAYS
- US HIGHWAYS
- STATE HIGHWAYS
- COUNTY HIGHWAYS
- TOWNSHIP HIGHWAYS
- RAILROADS
- TOWNSHIP BOUNDARY
- CORPORATE BOUNDARY

PROJECT TYPE

- SKIP PATCH
- AGG. HAUL AND SPREAD
- HMA RESURFACING
- A3 SURFACE
- CAPE SEAL
- SEAL COAT



2024 BRIDGE AND CULVERT PROGRAM

