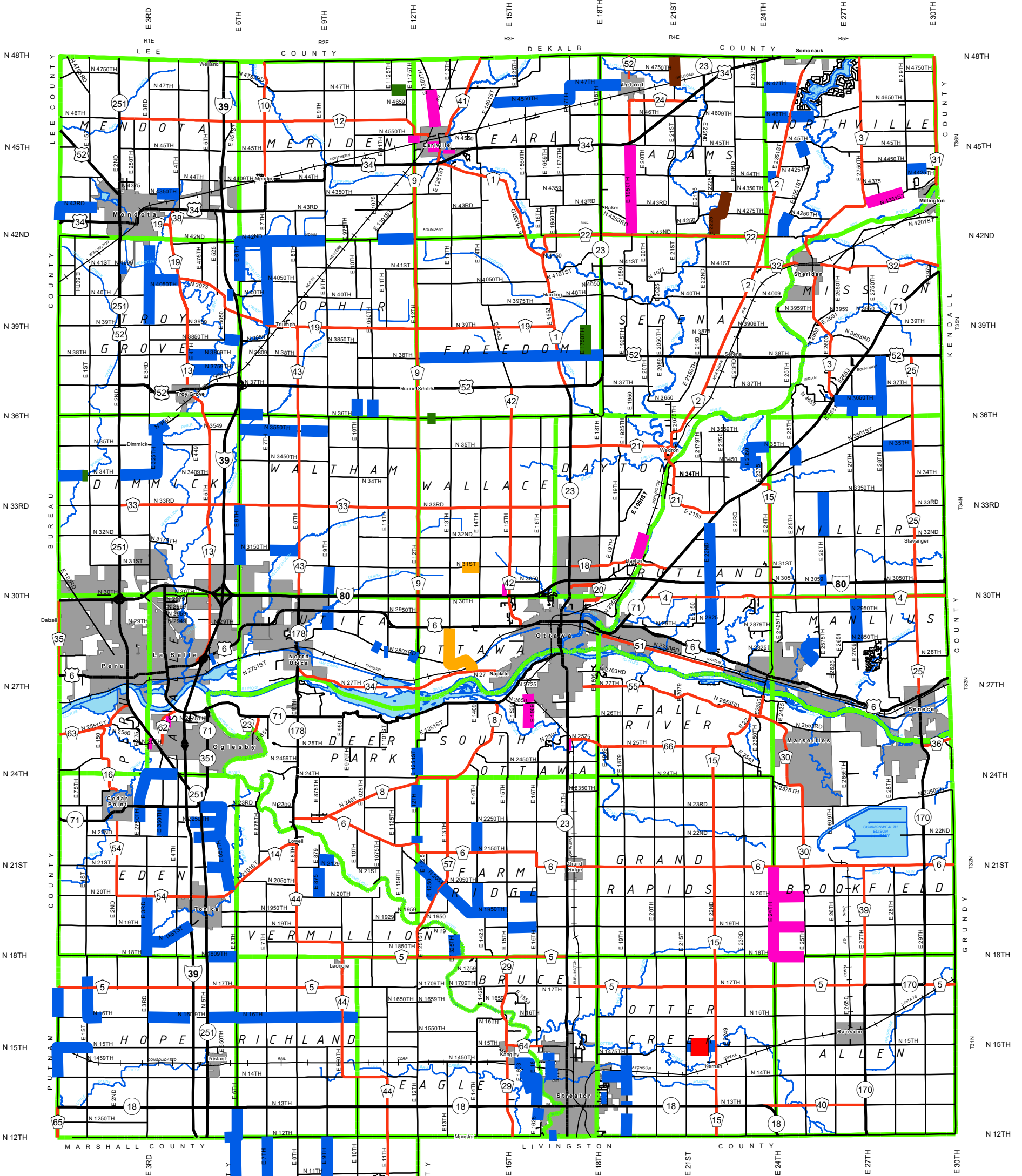


2024 TOWNSHIP HIGHWAY PROGRAM



LA SALLE COUNTY, ILLINOIS
 Donald R. Erat, P.E., County Engineer

Legend

- INTERSTATE HIGHWAYS
- US HIGHWAYS
- STATE HIGHWAYS
- COUNTY HIGHWAYS
- TOWNSHIP HIGHWAYS
- RAILROADS
- TOWNSHIP BOUNDARY
- CORPORATE BOUNDARY

PROJECT TYPE

- SKIP PATCH
- AGG. HAUL AND SPREAD
- HMA RESURFACING
- A3 SURFACE
- CAPE SEAL
- SEAL COAT

